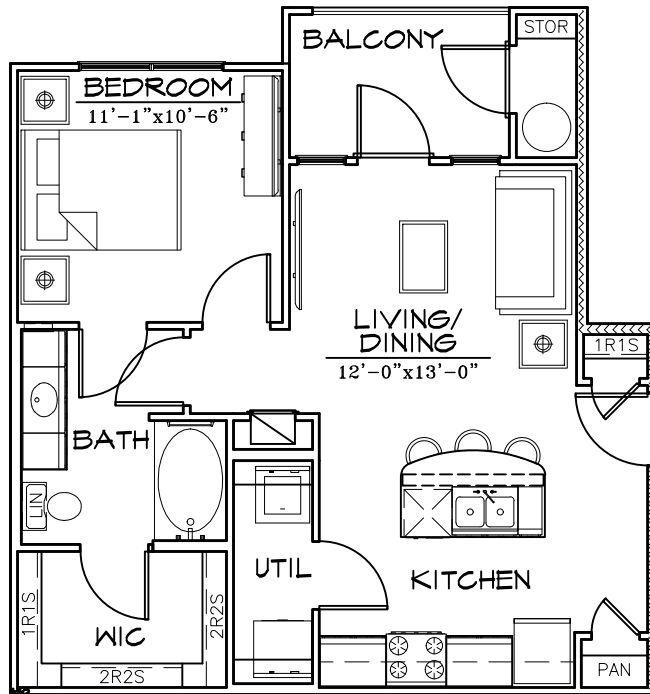


UNIT A1 FLOOR PLAN

ONE BEDROOM/ONE BATH

1/8"

550 SQ. FT.

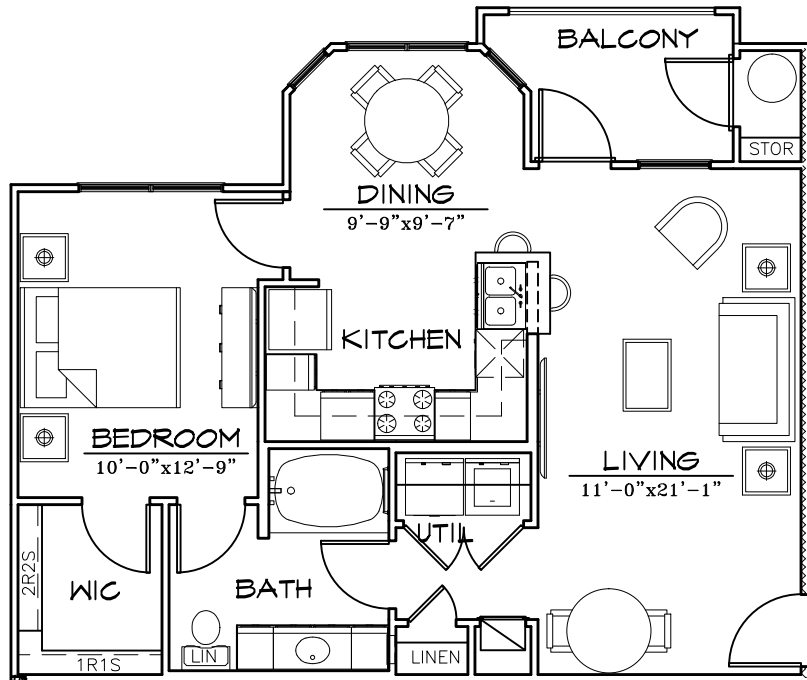


UNIT A2 FLOOR PLAN

ONE BEDROOM/ONE BATH

1/8"

650 SQ. FT.

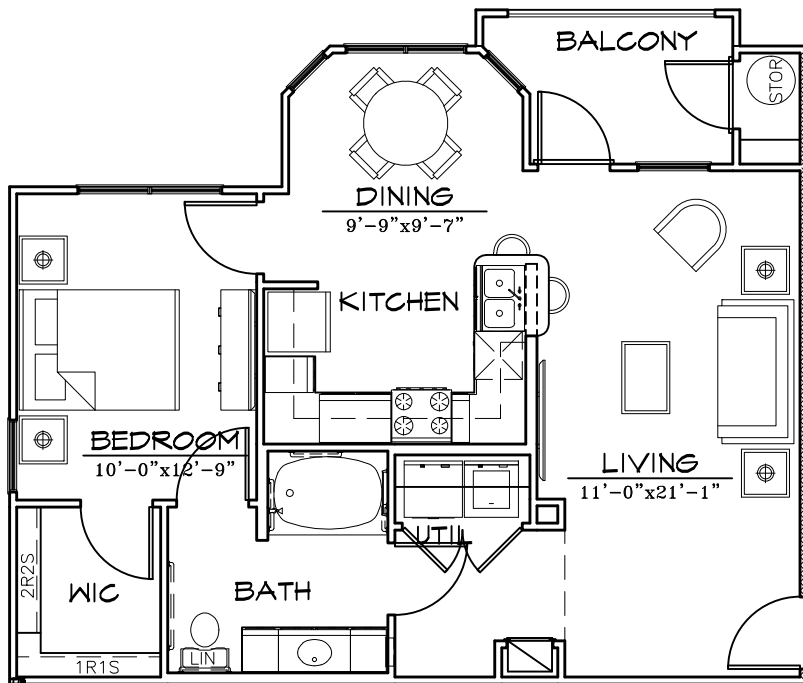


UNIT A3 FLOOR PLAN

ONE BEDROOM/ONE BATH

1/8"

775 SQ. FT.

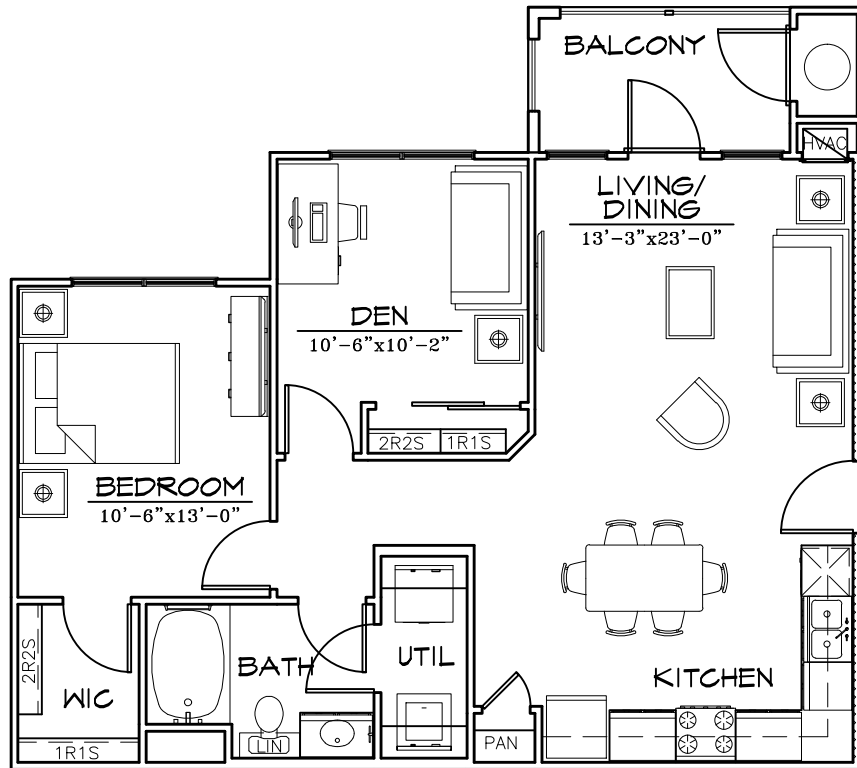


UNIT A3-HC FLOOR PLAN

ONE BEDROOM/ONE BATH

1/8"

775 SQ. FT.

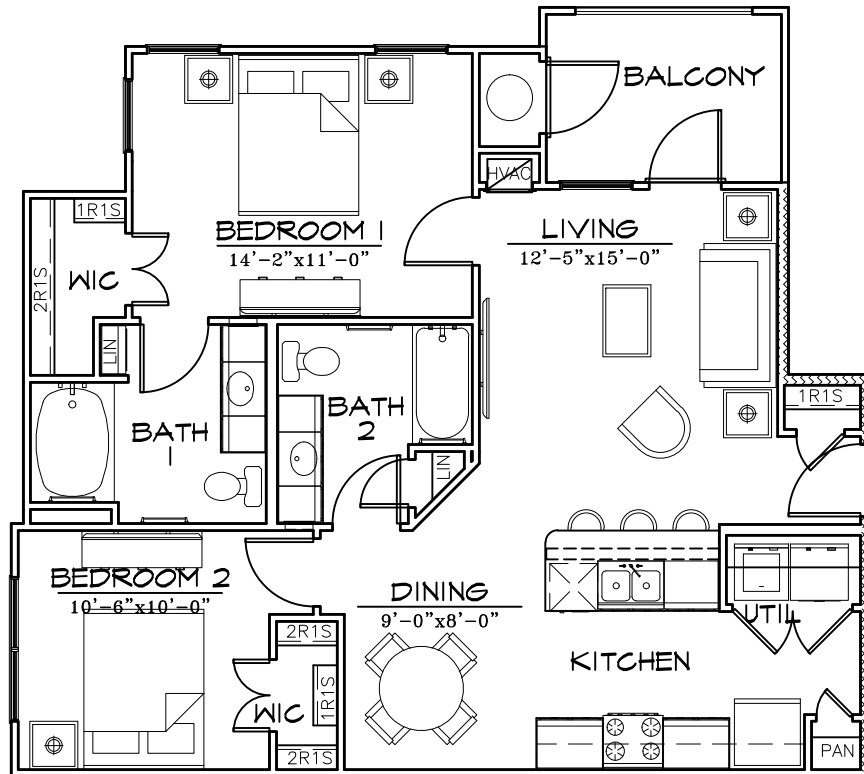


UNIT A4 FLOOR PLAN

ONE BEDROOM/ONE BATH/DEN

1/8"

875 SQ. FT.

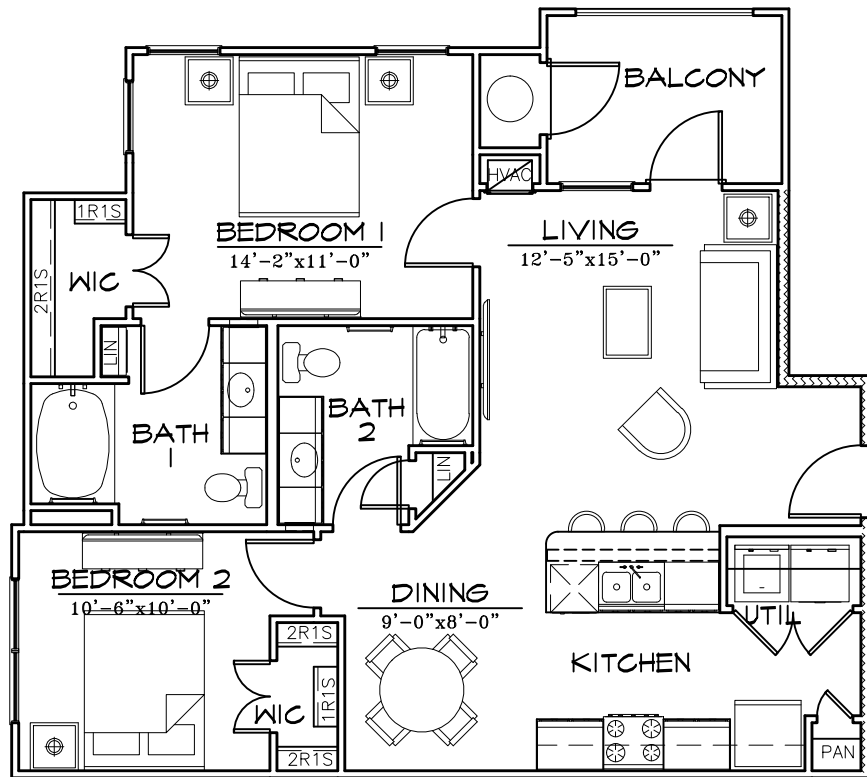


UNIT B1 FLOOR PLAN

TWO BEDROOM/ONE BATH

1/8"

950 SQ. FT.

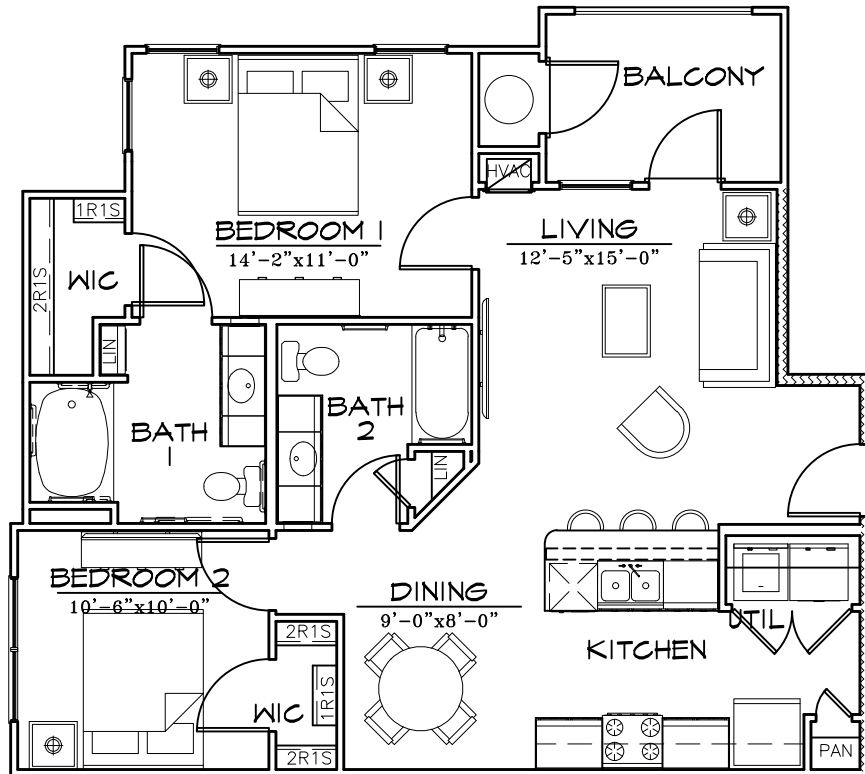


UNIT B1-1 FLOOR PLAN

TWO BEDROOM/ONE BATH

1/8"

950 SQ. FT.



UNIT B1-HC FLOOR PLAN

TWO BEDROOM/TWO BATH

1/8"

950 SQ. FT.

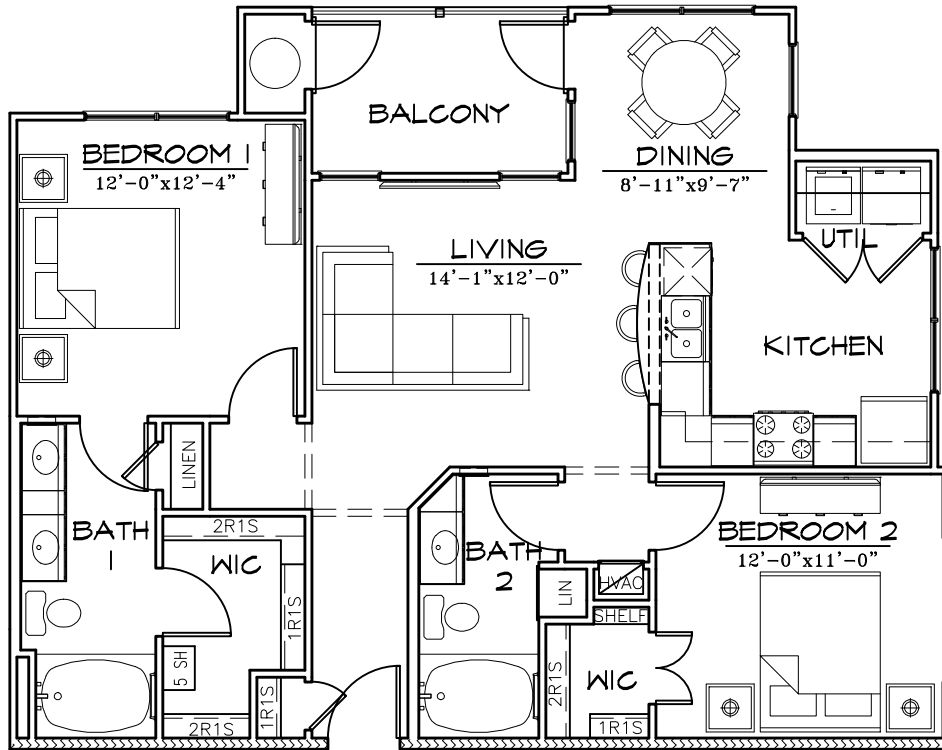
TRACE APARTMENTS

San Marcos, Texas
HIGHPOINTE

• ARCHITECTURE • LAND PLANNING • LANDSCAPE DESIGN • CONSTRUCTION ADMINISTRATION •

KELLY GROSSMAN
ARCHITECTS, L L C

260 ADDIE ROY ROAD, SUITE 210 AUSTIN, TEXAS 78746 ph: +1.512/327.3397



UNIT B2 FLOOR PLAN

TWO BEDROOM/TWO BATH

1/8"

1,050 SQ. FT.

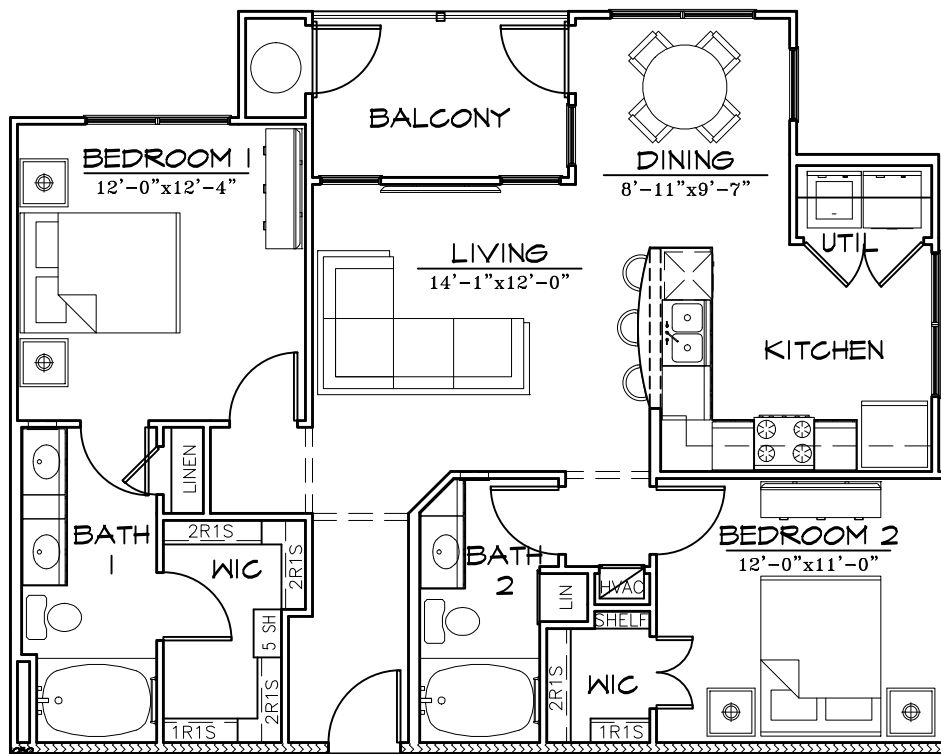
TRACE APARTMENTS

San Marcos, Texas
HIGHPOINTE

• ARCHITECTURE • LAND PLANNING • LANDSCAPE DESIGN • CONSTRUCTION ADMINISTRATION •

KELLY GROSSMAN
ARCHITECTS, L L C

260 ADDIE ROY ROAD, SUITE 210 AUSTIN, TEXAS 78746 ph: +1.512/327.3397



UNIT B2-1 FLOOR PLAN

TWO BEDROOM/TWO BATH

1/8"

1,050 SQ. FT.

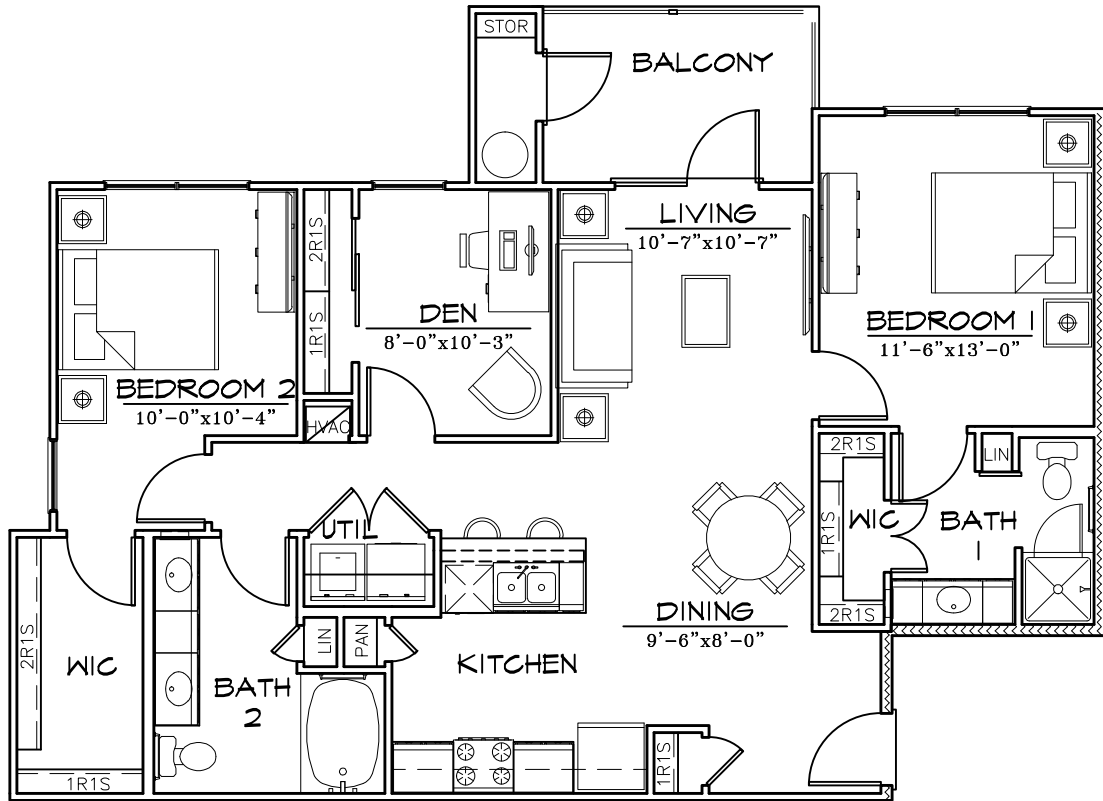
TRACE APARTMENTS

San Marcos, Texas
HIGHPOINTE

• ARCHITECTURE • LAND PLANNING • LANDSCAPE DESIGN • CONSTRUCTION ADMINISTRATION •

KELLY GROSSMAN
ARCHITECTS, L L C

260 ADDIE ROY ROAD, SUITE 210 AUSTIN, TEXAS 78746 ph: +1.512/327.3397



UNIT B3 FLOOR PLAN

TWO BEDROOM/TWO BATH/DEN

1/8"

1,150 SQ. FT.

TRACE APARTMENTS

San Marcos, Texas
HIGHPOINTE

• ARCHITECTURE • LAND PLANNING • LANDSCAPE DESIGN • CONSTRUCTION ADMINISTRATION •

KELLY GROSSMAN
ARCHITECTS, L L C

260 ADDIE ROY ROAD, SUITE 210 AUSTIN, TEXAS 78746 ph: +1.512/327.3397